

Test Automation Editor 1.0

Convenient creation of CANoe test modules for ECU testing

Overview of advantages

- > Just one tool to create and parameterize tests in all development phases of ECUs
- > Equally well-suited for ECU developers, test engineers and domain experts
- > CANoe Test Feature Set is easy to apply
- > Implement test projects efficiently; knowledge of XML is not required
- > Integration in CANoe: edit test modules effectively and iteratively in the Test Automation Editor and execute these test modules in CANoe
- > Parameterize test patterns symbol-based
- > Visualize symbols in a special Explorer Window

Application areas

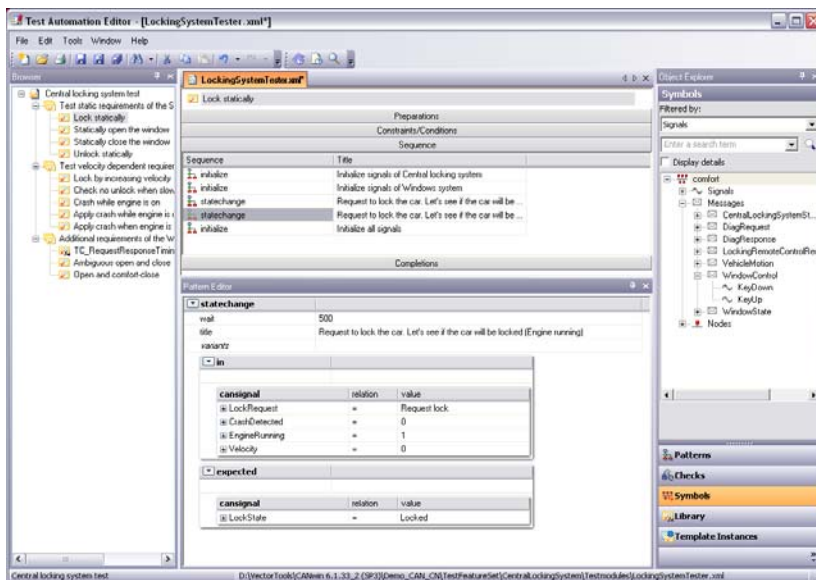
Test sequences are created, maintained and executed during many development phases of individual ECUs and networked systems. XML test modules in CANoe give you an ideal abstraction level for test sequences, which can be used in all phases of development. The test sequences consist of a structured sequence of test cases. The test cases in turn may be configured on the one hand by parameterizing prepared test patterns, or by test cases from CAPL libraries. Test modules and test cases can be created conveniently and quickly using the Test Automation Editor.

Functions

- > Create and edit test sequences
- > Define the execution sequence of test cases
- > Clear structuring of test cases in test groups
- > Compose test cases by sequentially parameterize predefined test patterns
- > Access to symbols for CAN, LIN and FlexRay (DBC, LDF, FIBEX)
- > Access to symbols from diagnostic descriptions (CDD, ODX)
- > Symbolic parameterization of the test patterns, e.g. with the help of drag & drop from the Symbol Explorer Window
- > Link and parameterize test cases from CAPL libraries
- > Print out a test list that is organized like a test specification, which can be reviewed by both test engineers and domain experts
- > Modern graphic user interface with dockable windows and drag & drop mechanisms

Special functions

- > Create and maintain test module variants consistently; they may be selected in CANoe before execution
- > Create and maintain test case templates for frequently recurring test sequences of the same type
- > Use and parameterize test case templates in clearly organized table-format



**Test Automation Editor:
Create test modules with
a user-friendly tool**

System requirements

Component	Recommended	Minimum
Processor	Pentium 4/2.6 GHz	Pentium III/1GHz
Memory (RAM)	512 MB	256 MB
Hard disk capacity	20 MB	
Screen resolution	1280×1024	1024×768
Operating system	Windows Vista, Windows XP SP2 or Windows 2000 SP4	

The Test Automation Editor is used in conjunction with a CANoe installation; please note the greater requirements for a CANoe Installation (see CANoe datasheet).

Licensing

The product is enabled conveniently and portably using a USB dongle, or it is enabled via a PC interface of the XL product line (CANcardXL, CANcaseXL, CANboardXL).

Summary

The functions of the Test Automation Editor extend far beyond the editing capabilities of an XML editor. Simultaneously, the wide variety of functions available in CANoe test modules is offered. This focus gives you an easy-to-use and at the same time very powerful tool.