

CANalyzer.IP, Version 7.1

The analysis tool for embedded systems with Ethernet

Overview of Advantages

Embedded Ethernet

- > Extraction of periodic signals from Ethernet packets and their display in Data and Graphic windows
- > Sending of your own Ethernet packets configured with Ethernet Packet Builder
- > Analyze communication between different networks via gateways
- > No effect on network communication by the Windows operating system or other applications thanks to isolated network interface. This may be a necessary requirement, especially in real-time systems.

Remote CAN Analysis

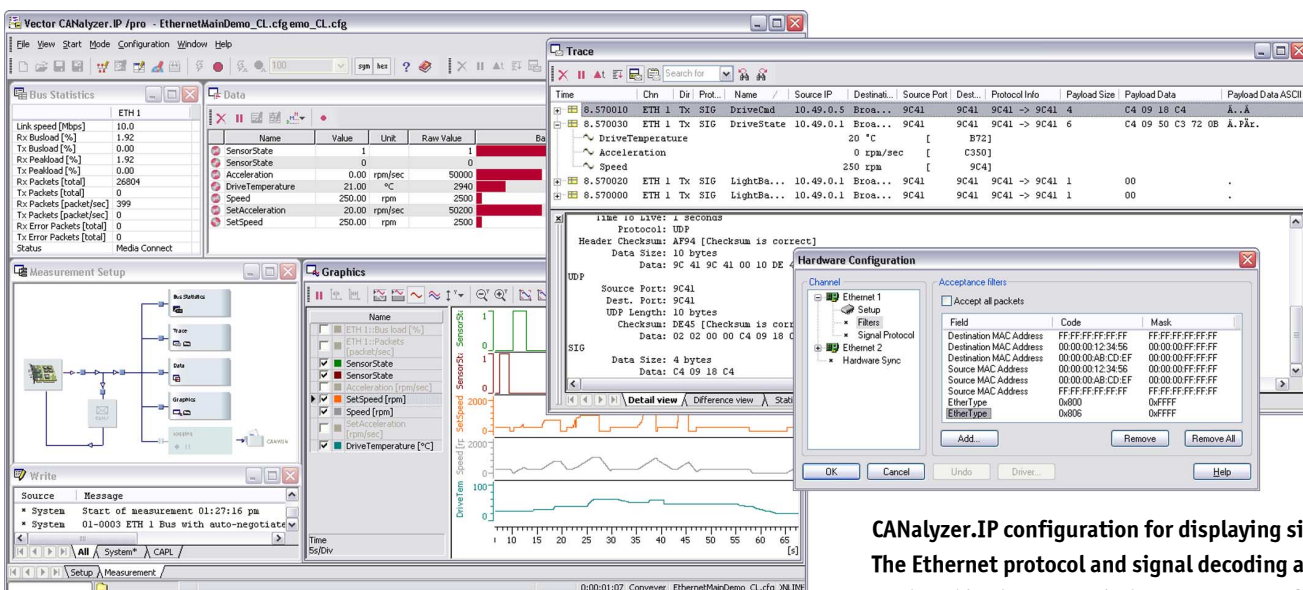
- > Wireless receiving and sending of CAN messages in case of difficult to access or mobile CAN bus systems
- > Usage of the original time stamps of the remote CAN bus e.g. in the Trace Window
- > Simultaneous analysis of the CAN communication on multiple vehicles
- > Remote monitoring of CAN bus systems via WLAN/Ethernet

Ethernet-based networks and the protocols built upon them continue to grow in importance in the embedded environment. In contrast to IT networks in the office area, the main focus is on transmission of most periodic signals. Furthermore, real-time Ethernet systems generally react sensitively to disturbances of connected analysis tools. Option .IP lets you extend CANalyzer by adding support of Ethernet systems. Exclusive use of Ethernet interfaces on the PC prevents Windows and other applications from affecting the real-time Ethernet system.

Integrating Ethernet in CANalyzer also gives you the ability to transparently transmit CAN messages via WLAN and/or Ethernet (Remote CAN Analysis). A supplemental CAN-(W)LAN gateway and the bus system option CAN is needed for this.

Application Areas

In **vehicle development**, the use cases involving support of Ethernet-based networks are generally the same as those in CAN bus systems. Moreover, the function Remote CAN Analysis opens up additional fields of use, such as simultaneous analysis of the data communication of multiple vehicles in Car2x systems, as well as remote monitoring of engine test benches and HIL tests.



CANalyzer.IP configuration for displaying signals. The Ethernet protocol and signal decoding are analyzed in the Trace Window. Acceptance filter for reducing the number of packets.

New functions in Version 7.1

- > Combination with other bus systems, e.g. FlexRay, MOST etc.
- > Support of CANalyzer variants pro, and fun
- > Ethernet Packet Builder supports IPv4, UDP, TCP, ARP, and RARP
- > Automatic protocol interpretation in Ethernet Packet Builder
- > Ethernet Packet Builder calculates checksums and lengths

In **automation engineering**, CANalyzer.IP offers versatile and multifaceted support in analyzing and optimizing communication and in debugging Ethernet-based systems such as EtherCAT, EtherNet/IP, Ethernet Powerlink and Profinet. A specific advantage of CANalyzer.IP is its ability to measure the delay times involved in converting signals to CAN-based systems via gateways. In analyzing difficult-to-access systems, or systems in very hazardous environments (explosion hazard, heat, gas, etc.), you can use WLAN to access the relevant CAN messages. Moreover, transmission of CAN messages via Ethernet enables remote diagnostics of systems right from an office desk or even from home. In the development of individual Ethernet nodes, you can use CANalyzer.IP to stimulate the Ethernet packets of other network nodes. This reduces the cost and effort involved in testing with real system components or a physical system.

In the development, and especially testing, of **agricultural and construction machines**, you benefit from the ability to transmit CAN messages via WLAN and Ethernet. You can analyze the communication and execute diagnostic accesses to the ECUs without having to ride along in the machine yourself.

Functions

Option .IP extends the functional range of CANalyzer 7.1 by adding Ethernet-specific functions and the ability to transmit CAN messages via WLAN or Ethernet.

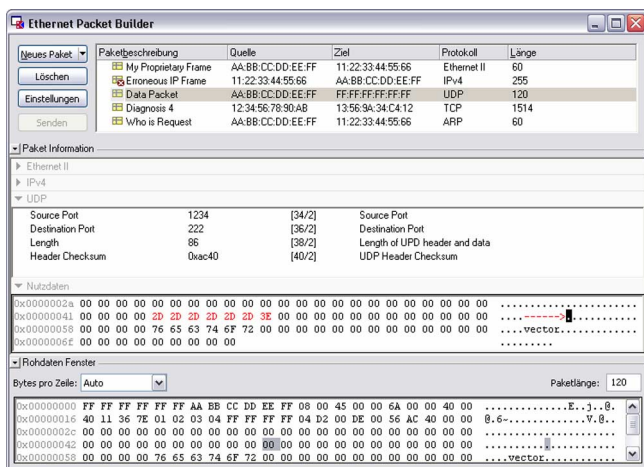
Special functions

Embedded Ethernet

- > Configuration of up to four Ethernet channels (10/100/1000 Mbps)
- > Support of Ethernet and Ethernet-based protocols such as IP, UDP, and TCP
- > Display of protocol header information in the Trace Window
- > Use of your own signal protocol decoder DLLs
- > Ethernet Packet Builder for configuring and sending Ethernet packets
- > Configurable exclusive use of Ethernet interfaces by CANalyzer.IP

Remote CAN Analysis

- > Transparent transmission of CAN messages via WLAN (requires additional hardware and the bus system option CAN)



Ethernet Packet Builder is used to create and send out Ethernet frames conveniently. Correct as well as faulty packets can be easily created using the configurable checksum and length calculation.

Hardware

At least one Ethernet interface is required to analyze embedded Ethernet systems. Up to four Ethernet interfaces may be used as measurement channels, depending on the specific application. The Remote CAN Analysis via WLAN or Ethernet requires an additional CAN-(W)LAN gateway. In the case of WLAN the test computer requires a WLAN receiver. You can request a current list of supported (W)LAN gateway modules by contacting Vector.